

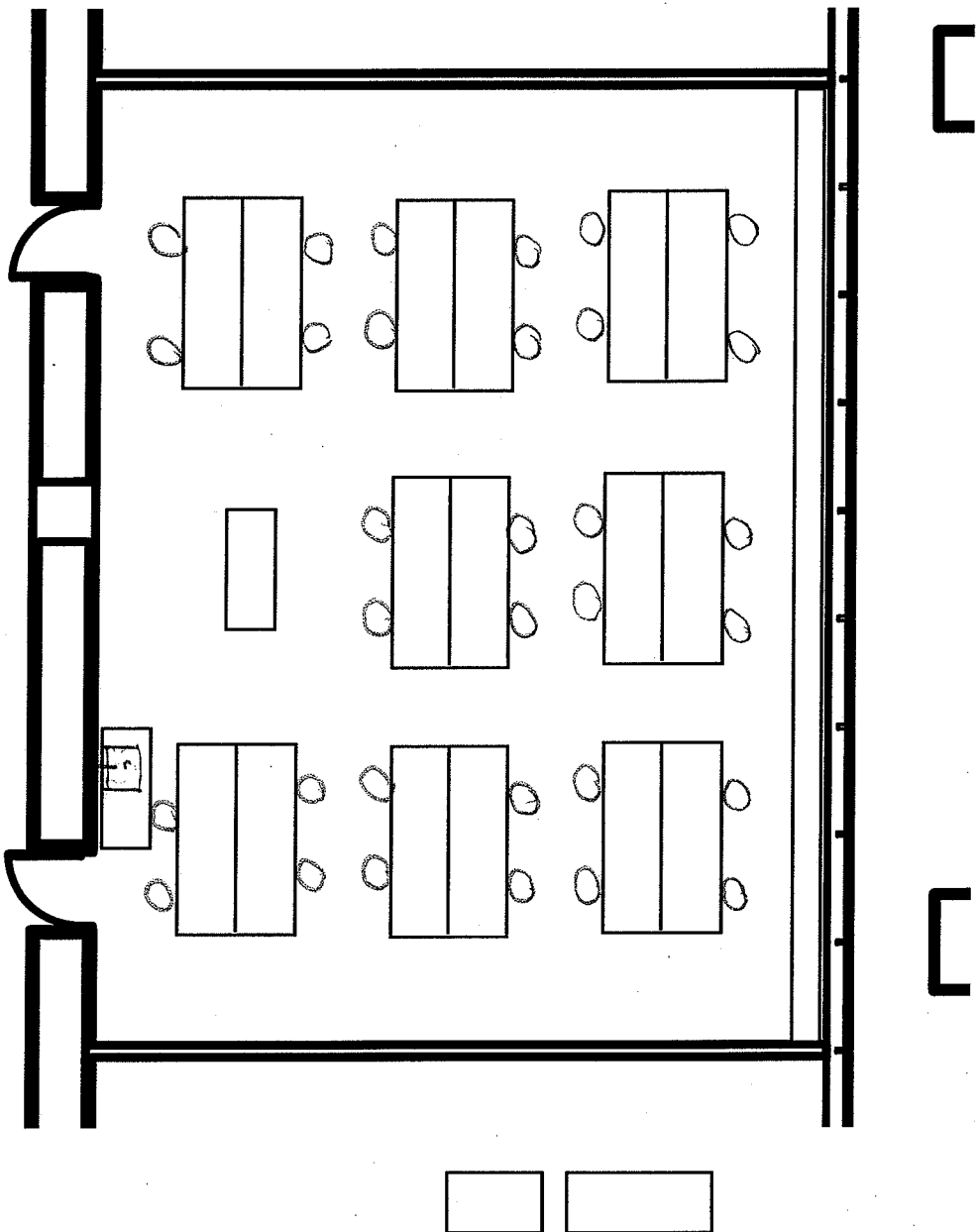
GENERAL BIOLOGY LAB . I

APRIL 24, 2009

6' (or 2 1/2') x 8' tables

32 stations

34' support

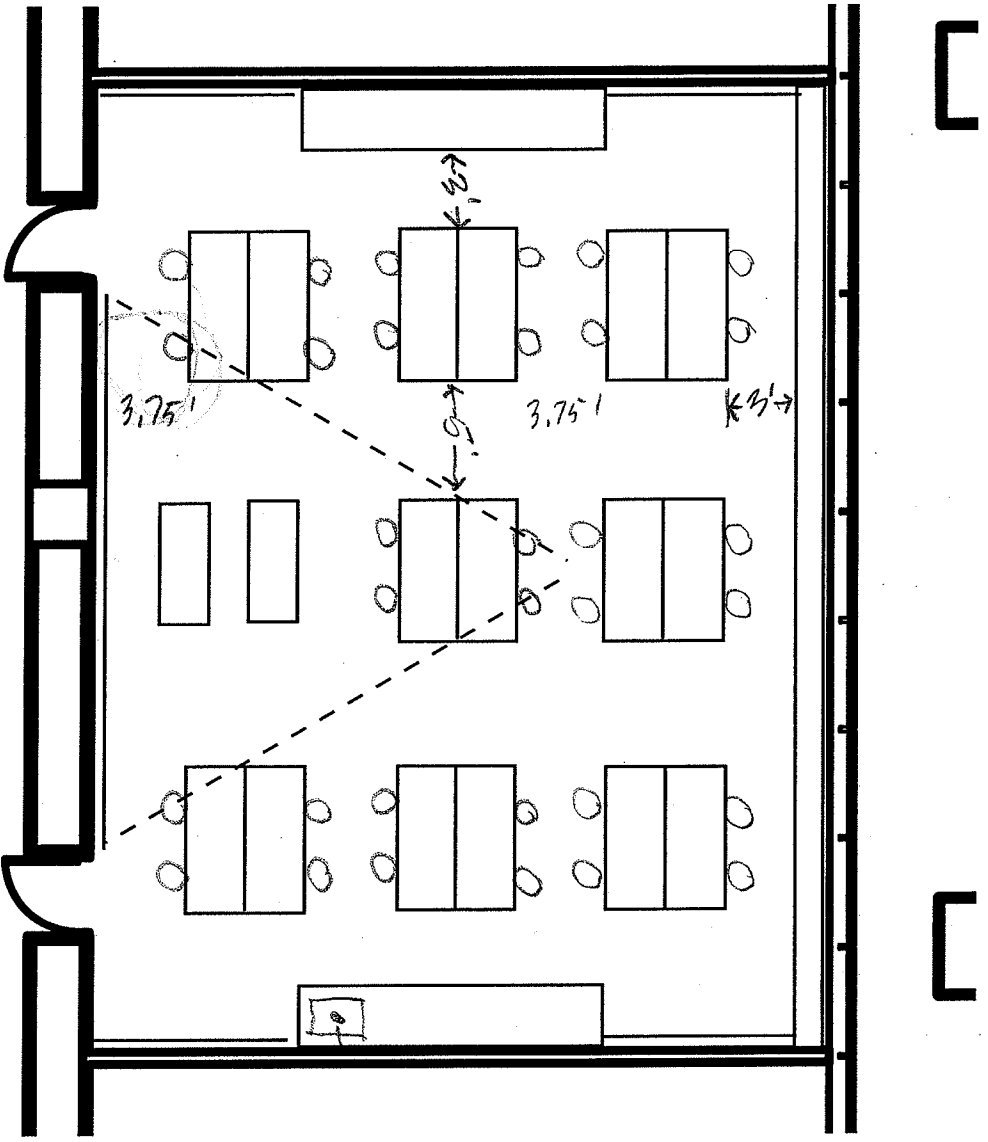


GENERAL BIOLOGY LAB . 2

APRIL 24, 2009

2 1/2' x 8' tables  
 32 chairs  
 10' support

Wt 600's  
200  
200

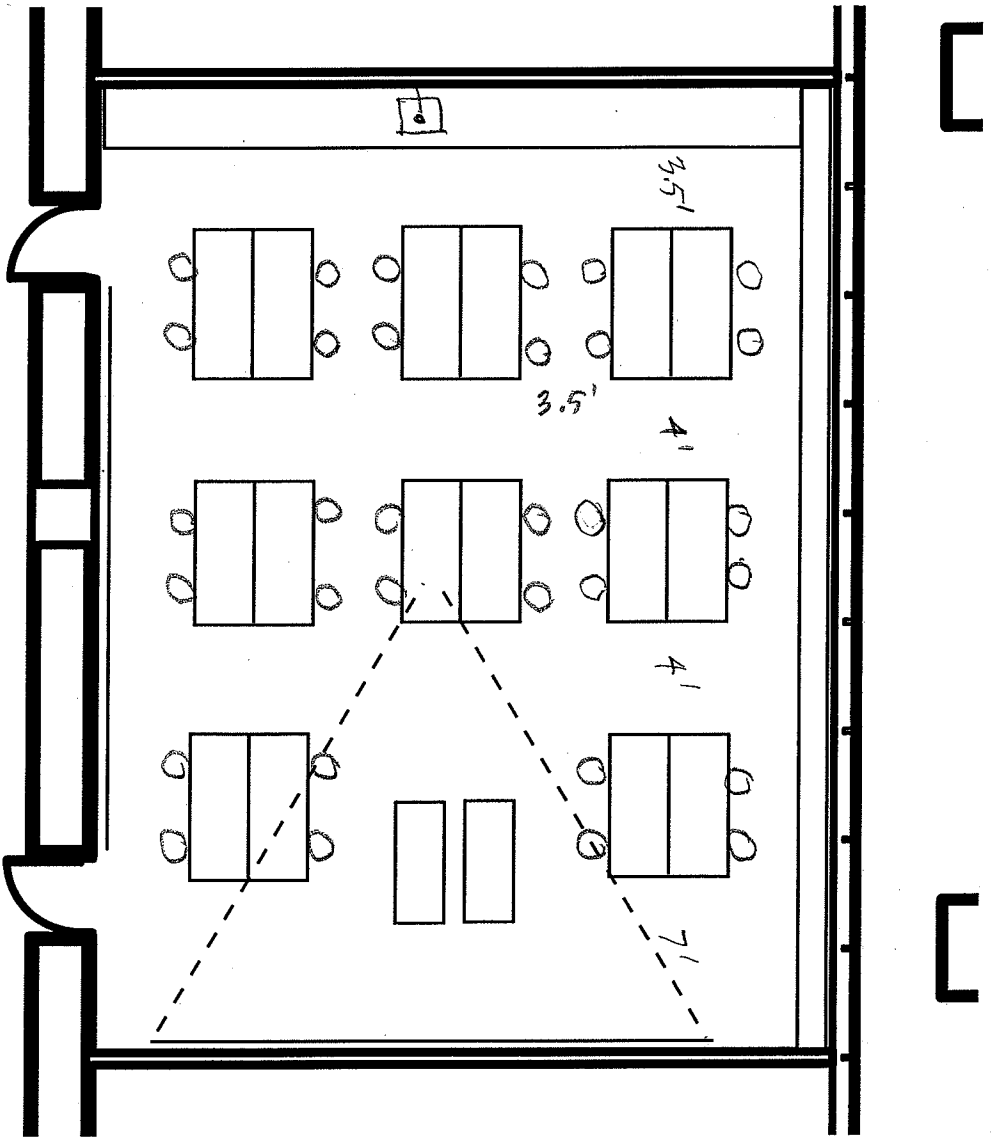


GENERAL BIOLOGY LABS - 3

24 APRIL 2009

2 1/2' x 6' tables  
32 stations  
20' support

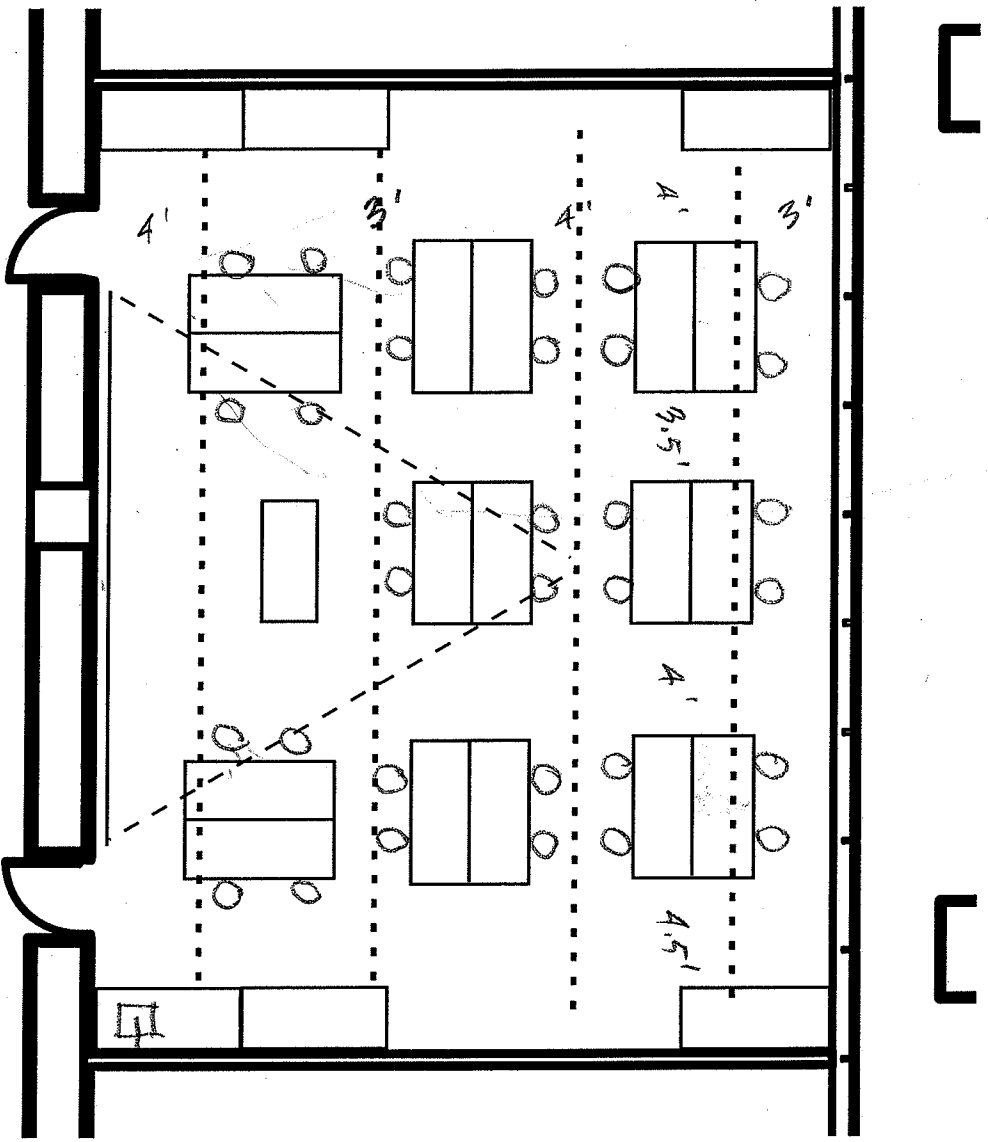




GENERAL BIOLOGY LAB. 4  
24 APRIL 2009

2 1/2' x 6' TABLES  
32 SEATINGS  
3.5' support



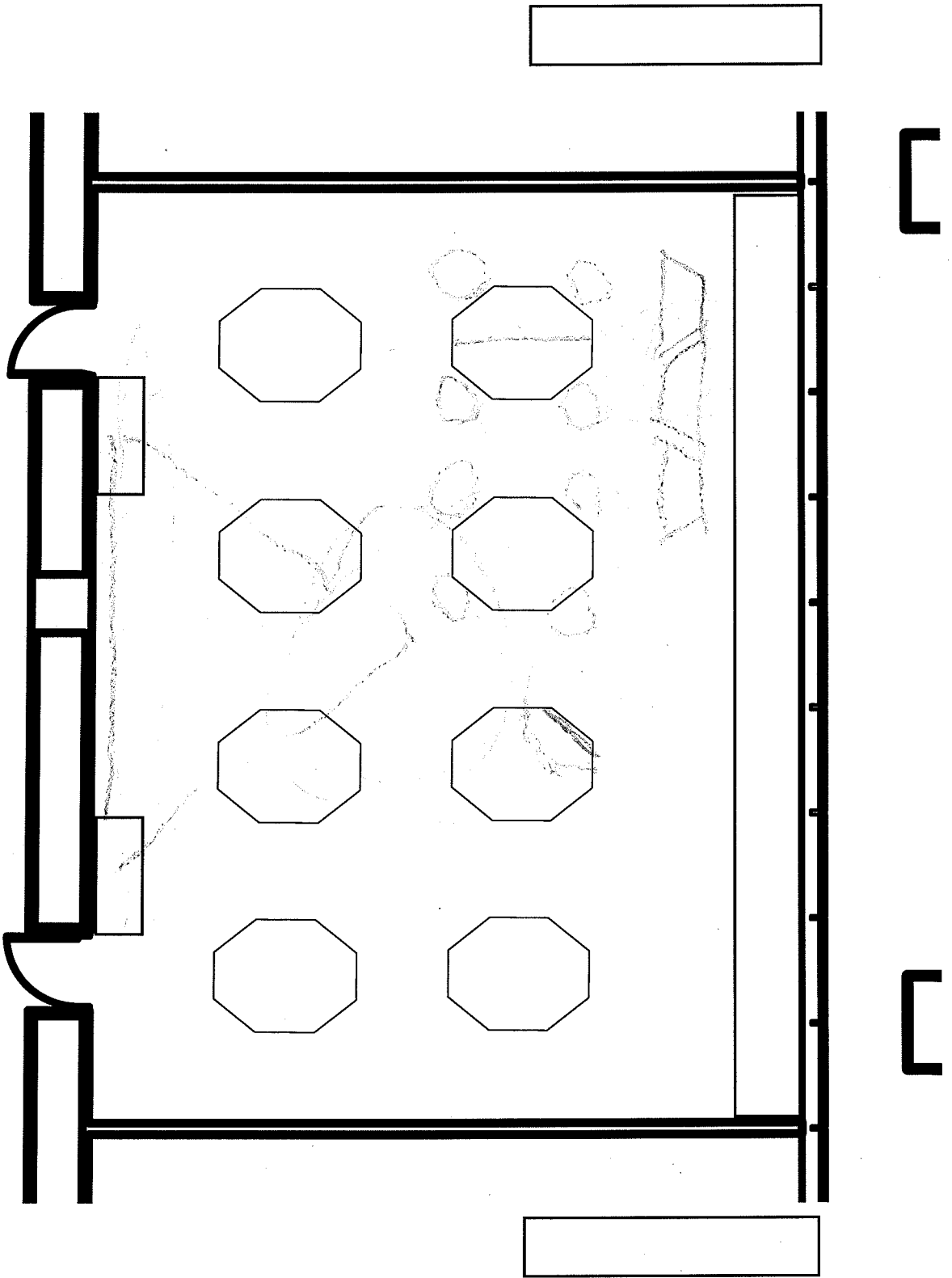


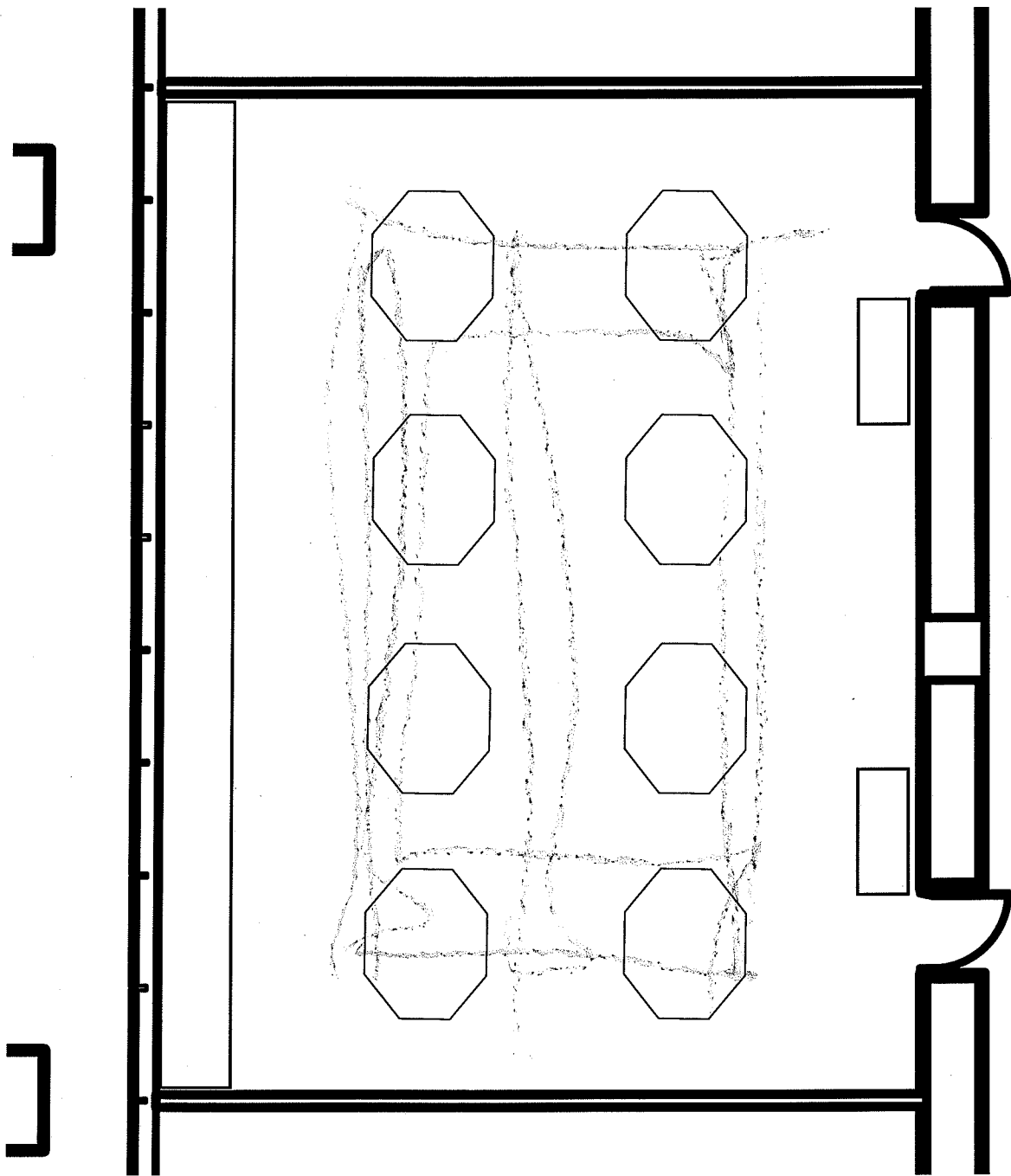
GENERAL BIOLOGY LAB. 15

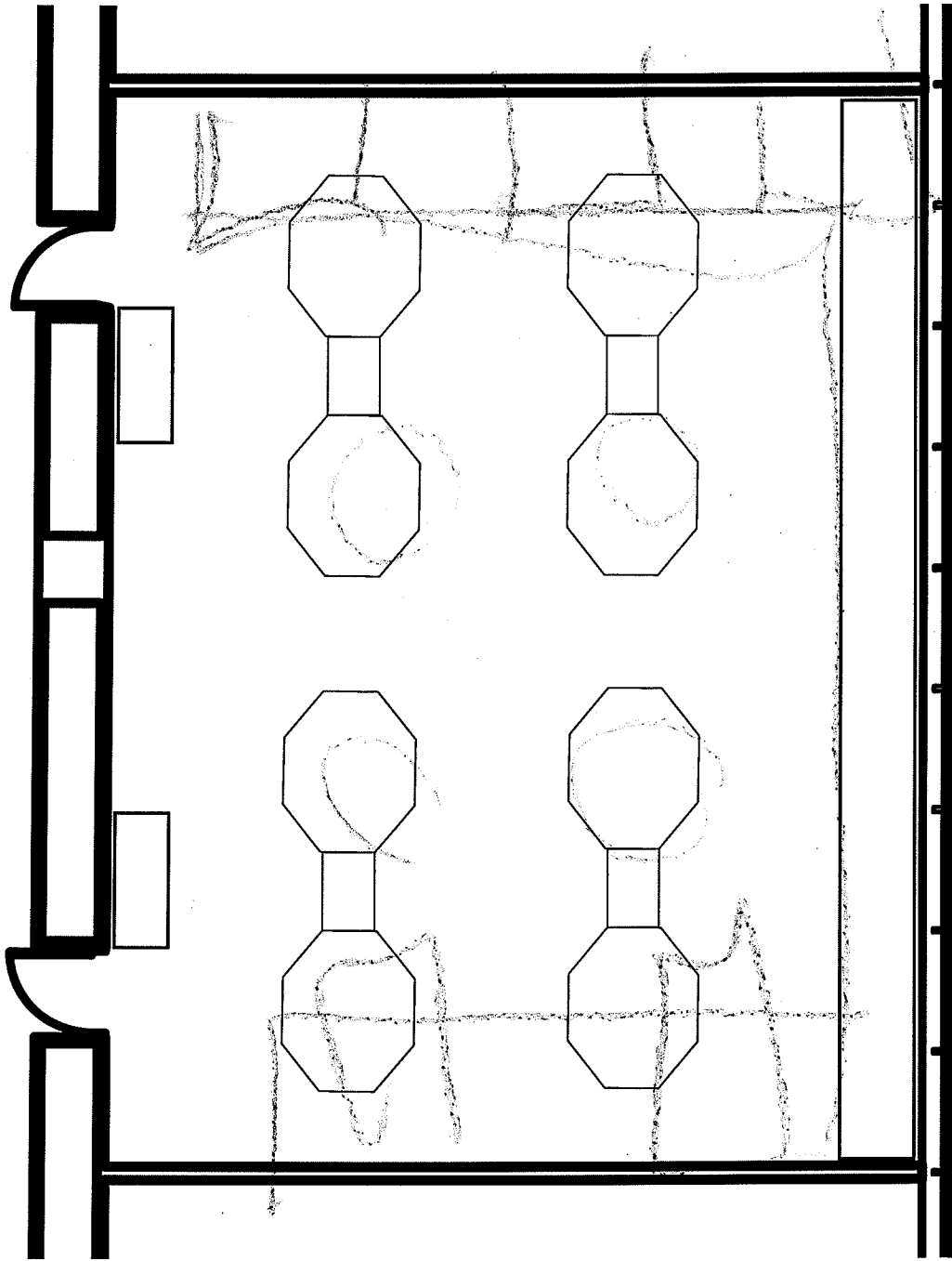
24 APRIL 2009

2 1/2' x 6' tables  
 32 stations  
 36' support

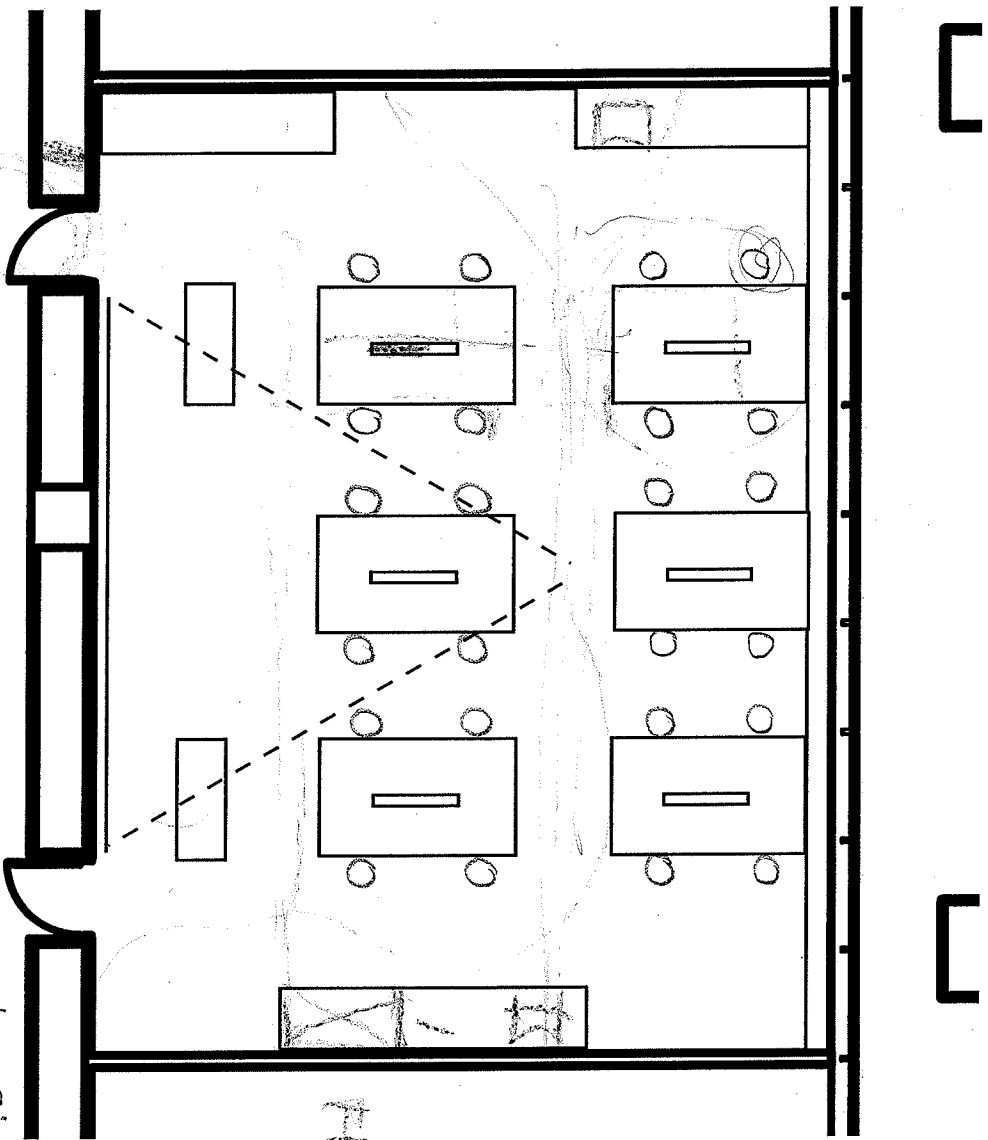
ben Bid 6  
4/24/09









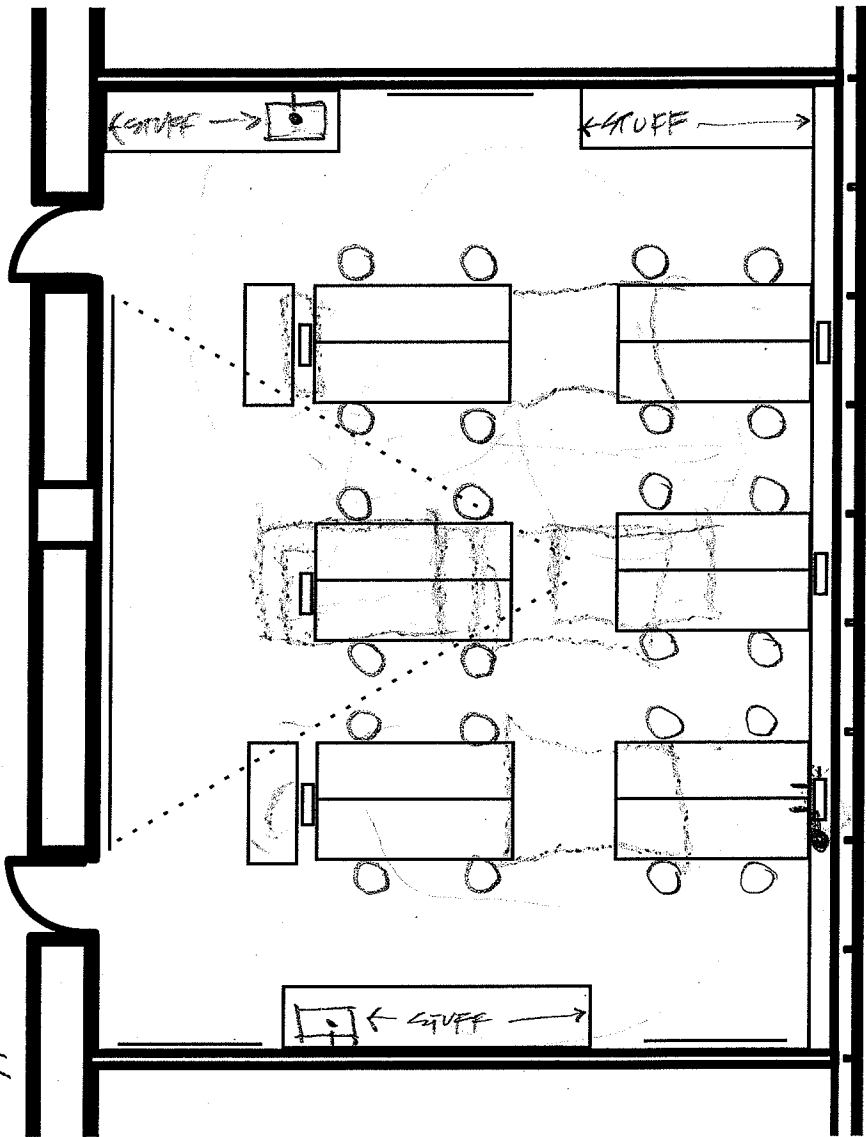


ADVANCED BIOLOGY LABS - 2

24 APRIL 09

5' x 8' benches  
 24 stations  
 42' support

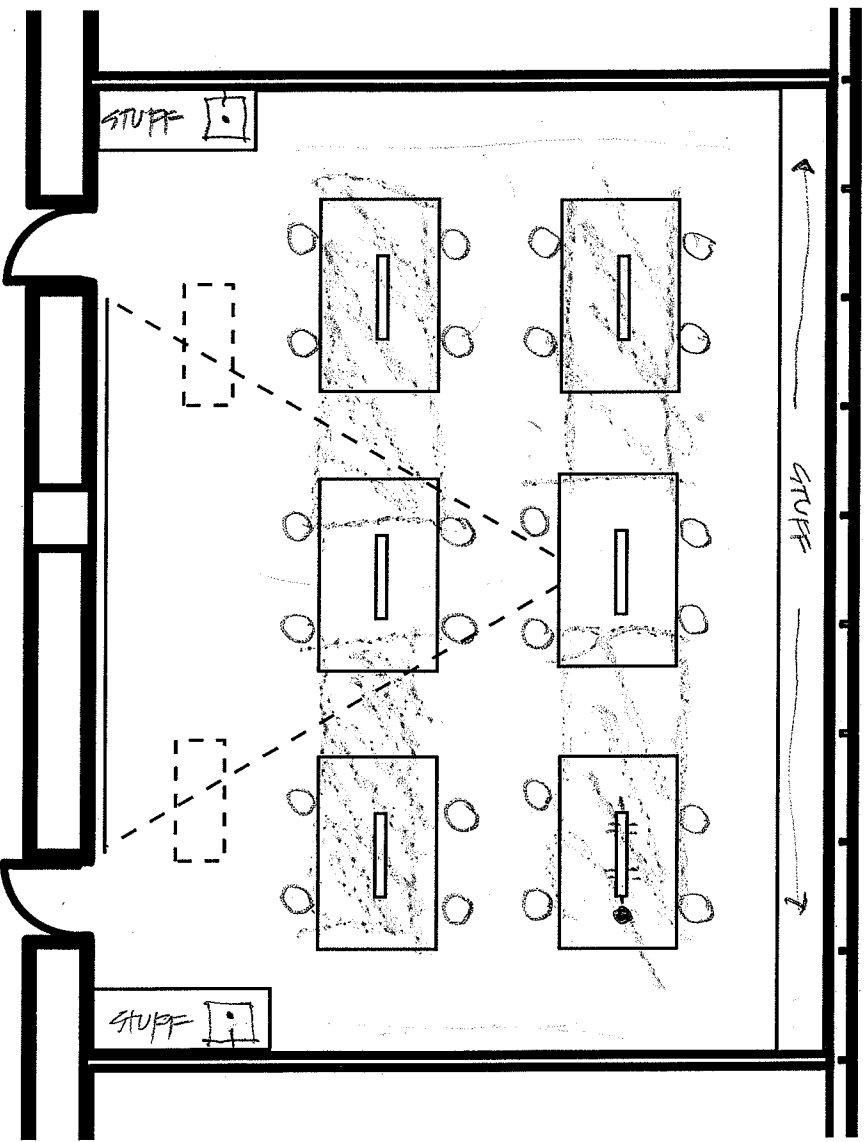
114



ADVANCED BIOLOGY LAB - 3

24 APRIL 09

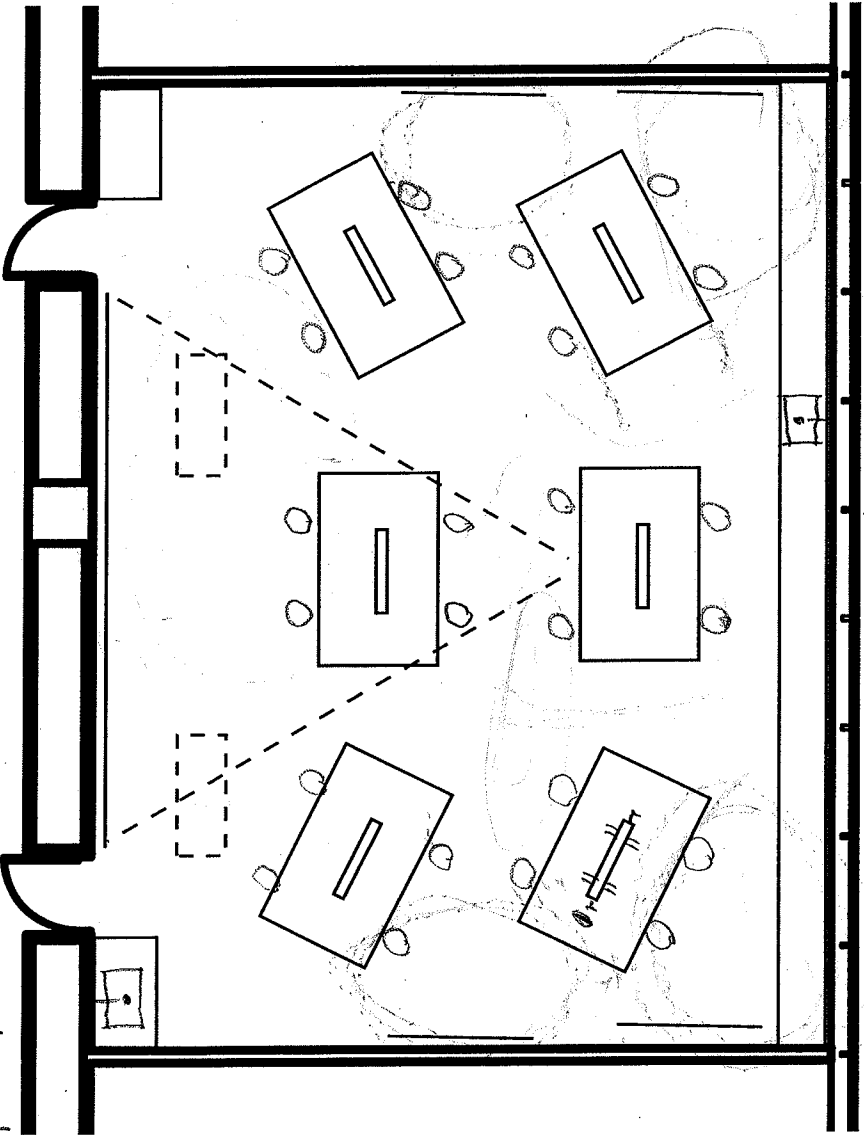
2 1/2' x 8' tables (mobile)  
 24 stations  
 42' support  
 6 utility pedestals



ADVANCED BIOLOGY LAB . 4

24 APRIL 2009

5' x 8' boards  
 24 stations  
 52' support



ADVANCED BIOLOGY LAB - 5  
24 APRIL 2009

5' x 8' benches  
24 stations  
50' support